



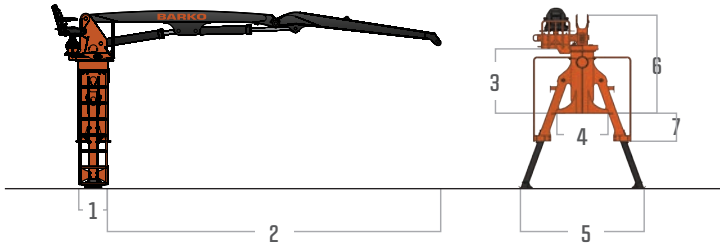
» 80XL & 80XLE BACK OF CAB LOADERS

SPECIFICATIONS



The Barko® 80XL and 80XLE Back of Cab Knuckleboom Loaders deliver high payload with low install weight for increased work productivity at a low total cost of operation. Equipped with standard features that set them apart, the 80XL and 80XLE last longer and perform harder to deliver the results you demand.

SPECIFICATIONS



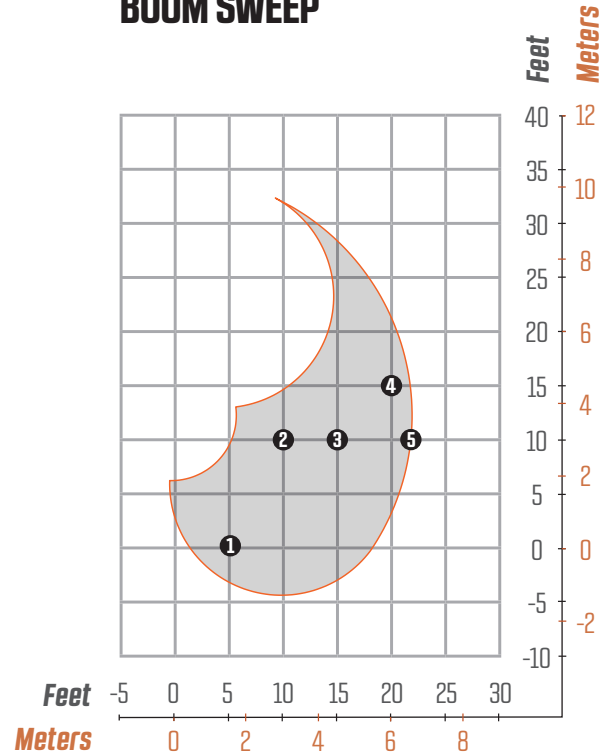
80XL BACK OF CAB LOADER

DIMENSIONS

1	2' 1.625" (65 cm)
2	20' 11" (636 cm)
3	5' 3" (158 cm)
4	3' 2" (97 cm)
5	10' 3" (312 cm)
6	8' 2" (247 cm)
7	2' 11" (89 cm)

Total Operating Weight 5,305 lbs (2,406 kg) loader with standard boom with cylinders (excluding grapple and options)

BOOM SWEEP



MAXIMUM FRONT LIFT CAPACITY

22' (6.7 m) straight boom, less attachment.

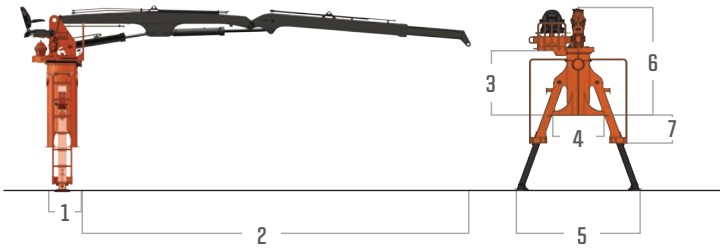
	Radius	Lift		Radius	Lift
1	5' (1.5 m)	9,880 lbs (4,481 kg)	4	20' (6.1 m)	5,010 lbs (2,272 kg)
2	10' (3.0 m)	9,550 lbs (4,331 kg)	5	Full Reach	1,940 lbs (879 kg)
3	15' (4.6 m)	6,620 lbs (3,002 kg)			

PERFORMANCE (BACK OF CAB LOADERS)

POWER	
Source	Customer supplied power take-off
HYDRAULICS	
Tank	45 gal. (170 L) with suction and return line filters
Pump	Triple gear pump producing 26/21/15 GPM (98/79/57 LPM) at 1,600 RPM
Operating Pressure	3,200 psi (220 bar) main system
Valves	Sectional control type with folding mechanical joysticks
Features	Heavy-wall tubing and 4-wire hose; independent swing system with direct-linked foot controls, rotary manifold to allow continuous rotation
SWING SYSTEM	
Rotation	Continuous rotation on 27" (686 mm) external tooth turntable bearing, powered by hydraulic motor and single stage planetary gearbox

BOOM	
Structure	Fabricated box style design with all welded construction and wear plates; bronze bushing with grease grooves at boom pivot points
Standard Boom	BOXL - 22' (671 cm) straight BOXLE - 22' to 25' (671 to 762 cm) telescoping
Horizontal Reach	BOXL - 21' 10" (665 cm) BOXLE - 24' 10" (757 cm)
Vertical Reach	BOXL - 34' 5" (1,049 cm) from ground when mounted on 44" (112 cm) truck frame BOXLE - 37' 3" (1,140 cm) from ground when mounted on 44" (112 cm) truck frame
Cylinders	Hydraulic cylinders with spherical bearings and wear rings on glands and pistons; heavy wall honed steel tubing; heat-treated cylinder rods with heavy chrome plating; induction hardened rods and bolt-on glands
Features	
Main Boom	5" x 36" (127 x 914 mm) with 3" (76 mm) rod
Stick Boom	5" x 30" (127 x 762 mm) with 2.5" (63.5 mm) rod

SPECIFICATIONS



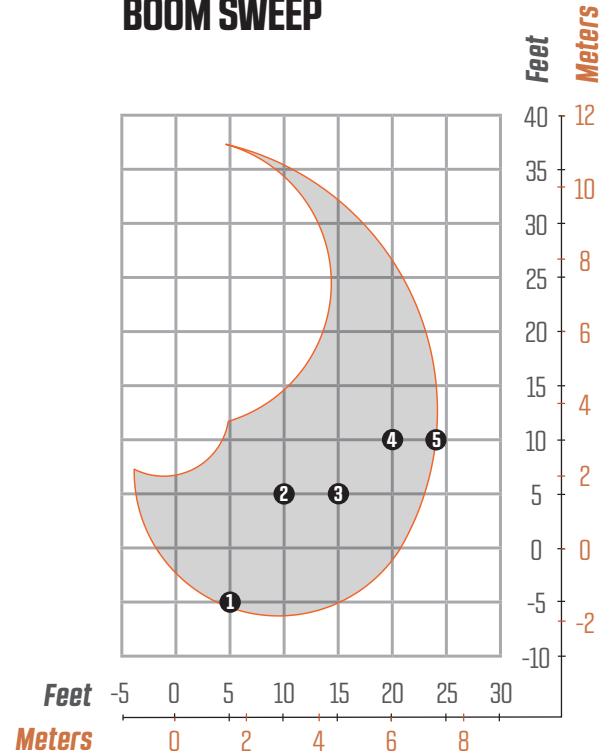
80XLE BACK OF CAB LOADER

DIMENSIONS

1	2' 1.625" (65 cm)
2	25' (762 cm) with boom extended
3	5' 3" (158 cm)
4	3' 2" (97 cm)
5	10' 3" (312 cm)
6	8' 2" (247 cm)
7	2' 11" (89 cm)

Total Operating Weight : 5,985 lbs (2,715 kg) loader with telescoping boom with cylinders (excluding grapple and options)

BOOM SWEEP



MAXIMUM FRONT LIFT CAPACITY

25' (7.6 m) telescoping boom, less attachment.

	Radius	Lift		Radius	Lift
1	5' (1.5 m)	10,450 lbs (4,740 kg)	4	20' (6.1 m)	4,670 lbs (2,118 kg)
2	10' (3.0 m)	9,540 lbs (4,327 kg)	5	Full Reach	1,250 lbs (566 kg)
3	15' (4.6 m)	6,370 lbs (2,889 kg)			

FEATURES & OPTIONS

OPERATOR PLATFORM

Rotating platform with beneath-the-seat style valve mounting and foot swing pedal 8-pass electrical collector	Comfortable, locking, fold-down seat with armrests
--	--

STABILIZERS/SUBFRAME/PADS

Telescopic stabilizers with 43" (109 cm) stroke cylinders enclosed in tubular and fabricated box style assembly with wear plates	Controlled from platform or ground
--	------------------------------------

STANDARD FEATURES

Mounting bolts and support plates supplied Dual ladders with non-slip treading	Load securing posts
---	---------------------

OPTIONS

All Models - Spacers to accommodate various frame heights
Oil cooler kit with 12-volt fan
Left hand platform
55W halogen work lamps

80XL - 26' straight boom

*See complete listing of options at www.barko.com.

* Specifications are subject to change.



BARKO HYDRAULICS, LLC

One Banks Ave.
Superior, WI 54880

P: 715.395.6700
info@barko.com | www.barko.com



<i>1 Year</i>	Full machine
<i>2 Years</i>	Powertrain and major hydraulic components
<i>3 Years</i>	Machine structure

WARRANTY